

SCALE 1"=300'
 JANUARY 1, 1997

* Indicates survey on file with tax map dept

* Inadequate description

RELATIVE REPRESENTATION

A	B	C	D
E	F	G	H
I	J	K	L
M	N	O	P

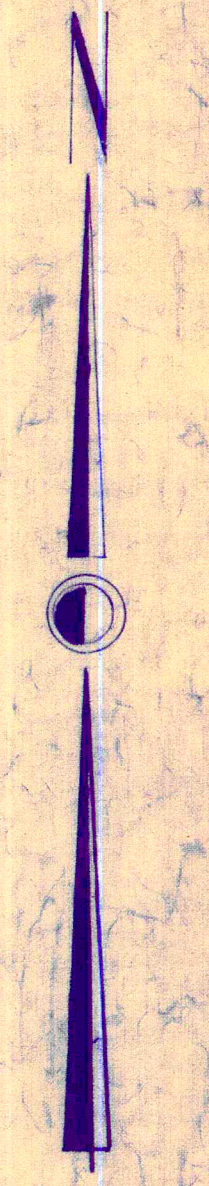
CHESTER B

23

24

26

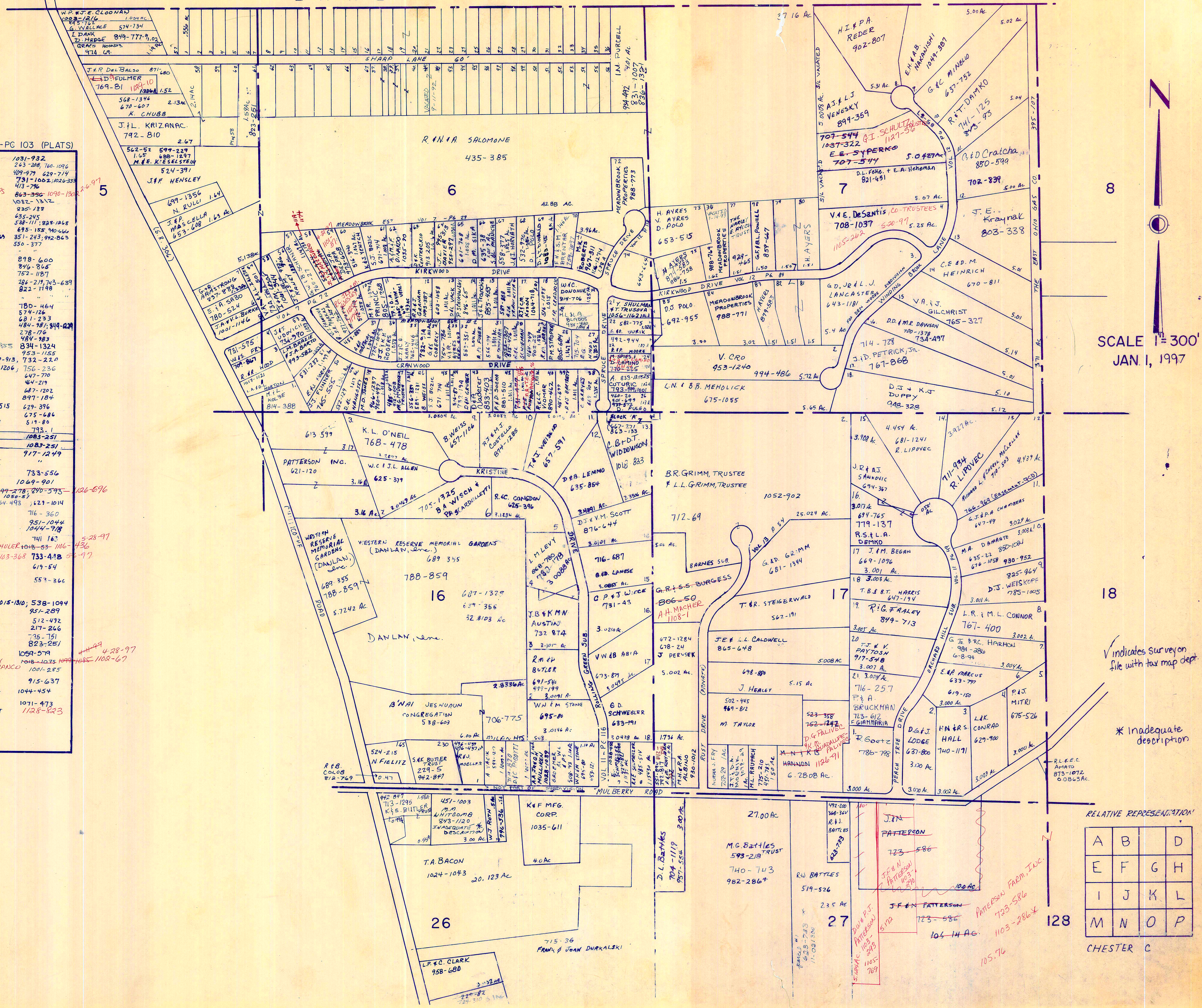
1855



LAKE COUNTY

E. SHARP SURVEY VOL. 6-PC 103 (PLATS)

1. M. SANTEK	1031-932
2. D. CICHIELLA	263-208, 760-1096
3. SALVO	409-979, 629-719
4. SEDICENZO & A. DI PAOLO	781-1002, 1026-338
5. B.L. HOLDER	473-786
6. F.M. MARRA, L.W. & R. PHILLIPS	863-356, 1090-1200, 269-97
7. W.B. VAN HORNE	1082-1372
8. VIT. IANARO	825-188
9. V. IANARO	635-245
10. B.F. WHITNEY	538-111, 828-1468
11. A.B. TAYLOR	695-158, 940-666
12. J.A.T. SKRIB TRUST	703-1169, 351-243, 942-863
13. J.A.M. SMITH	550-377
14.	
15. S.J. PLA	818-600
16. M.C. KOVACIC	876-865
17. AM & L.F. DINARDO	752-1187
18. C.T. & G. BREZINA	286-219, 743-639
19. A.P.O. OBRADIC	821-1148
20.	
21. J.A. WARGELIN	1106-911, 780-464
22. W.A. COOPER	574-124
23. J.F. DUJMOVIC	681-233
24. J.D. BOZIC	484-981, 944-829
25.	
26. J.C. ADAMS	1077-855, 484-983
27. M.R. & J. KOSLEY	953-1155
28. F. RUZIC	989-913, 732-220
29.	
30. C.E. HECKMAN	756-236
31. G.J. & M.J. REESE	447-770
32. G.M. REESE	484-219
33. M.A.P. HISH	687-1202
34. P.W. DAVID & L.R. KLAUSS	897-184
35. T. & A. METZUL	667-515, 629-396
36.	
37. D. WEY	W-20 #38, 519-80
38. D. CORCELLI (E-60)	793-1
39. R.R. KEGLOVIC (W-40)	1083-251
40. R.R. KEGLOVIC	1083-251
41. R.A. CALABRESE	917-1249
42.	
43. H.J. & J. RACHENSKI	733-556
44. M.J. WACLANSKI	1049-901
45. F.R. VERNON, M. GUANERA	947-278, 840-593, 126-896
46. D.A. KRÄMER	1050-51
47. G.W. & S.L. STUMPF	764-493, 629-1014
48. K.A. SCHAUER	716-360
49. H.L. & R. GRASSER	951-1044, 1044-918
50. G.D. KLEINSORGE & J.J. MOORE	741-163
51. D.H. VETTER, R.J. & R.G. SCHULER	1048-83, 1106-436, 5-28-97
52. R. SHOLTIS, II	1103-368, 733-418, 3-1-97
53. N.A.C. GRASSI	619-54
54. R.A.K. SHISILA	553-366
55.	
56. B.J. STEBIC	1018-1810, 538-1094
57. M.A. & P.J. PETTI	951-289
58. F.C. CARLO	512-492
59. E. SHARP	217-266
60. S.L. SHARP	735-751
61. A.C. MULLIKEN	823-251
62. J.M. MARFA	1059-579
63. LINDOON, HENRY, COM. HENRY	1048-1035, 1102-67, 4-28-97
64. G.A. WHITE & M. GEAR	1001-285
65. G.D. WHITE	915-637
66. J.G. WOODWORTH & T.H. WARNEKA	1044-454
67. T. KEGLOVIC, TRUSTEE	1071-473
T. KEGLOVIC LIVING TRUST	1128-823



SCALE 1" = 300'
JAN 1, 1997

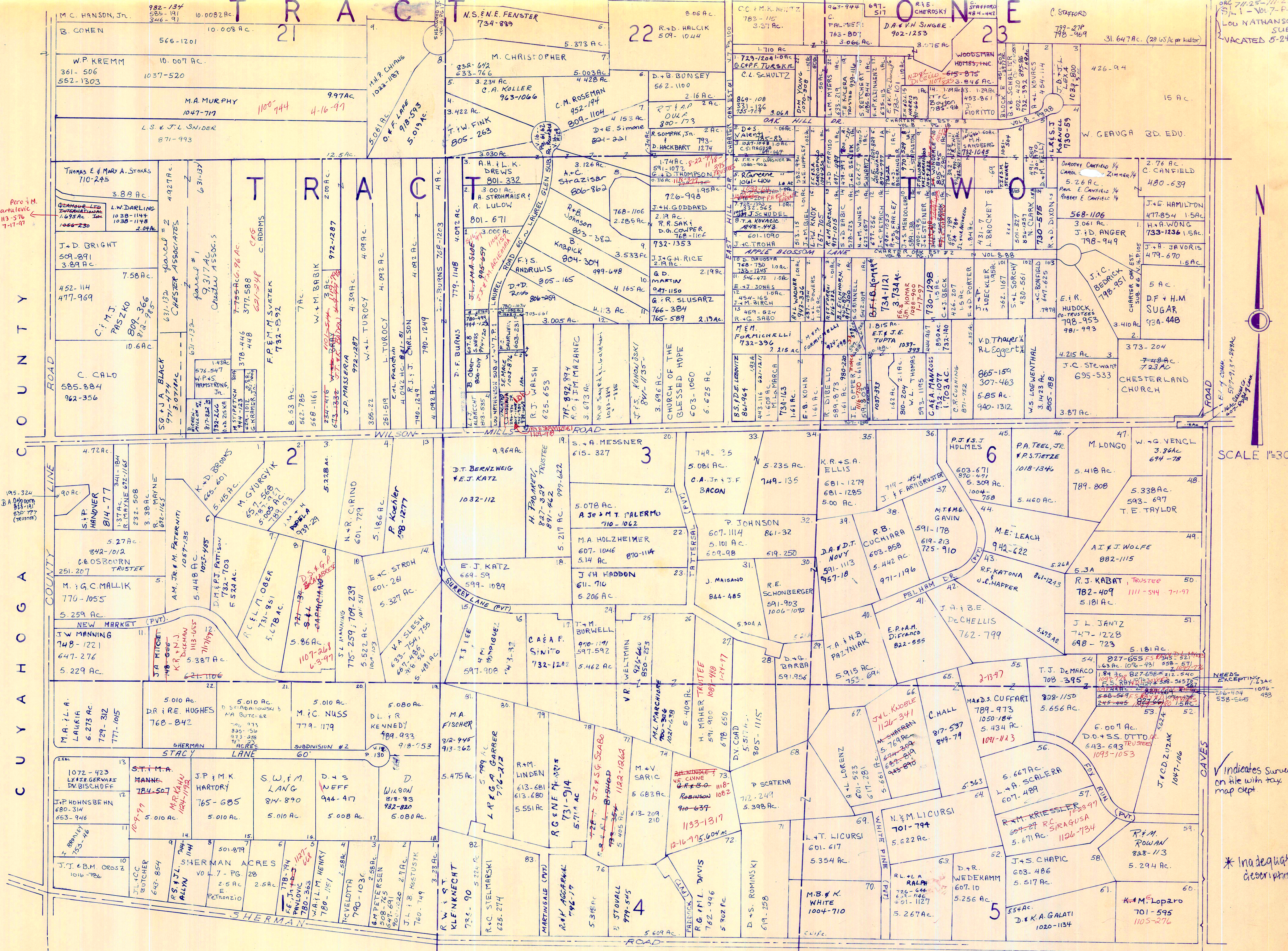
RELATIVE REPRESENTATION

A	B	C	D
E	F	G	H
I	J	K	L
M	N	O	P

CHESTER C

* Inadequate description

✓ indicates survey on file with tax map dept.



Poco 4 M.
Bartulovic
113-576
7-17-97

195-324
B.A. D'Amico
853-111
853-777
(Trustee)

ARC 71-25-711-27
S-1 - Vol 7-P-1
LOU NATHANSONS
SUB.
VACATED 5-24-94

61-7 COMM
100-100
100-100
100-100

SCALE 1"=300'

✓ Indicates Survey
on file with tax
map dept

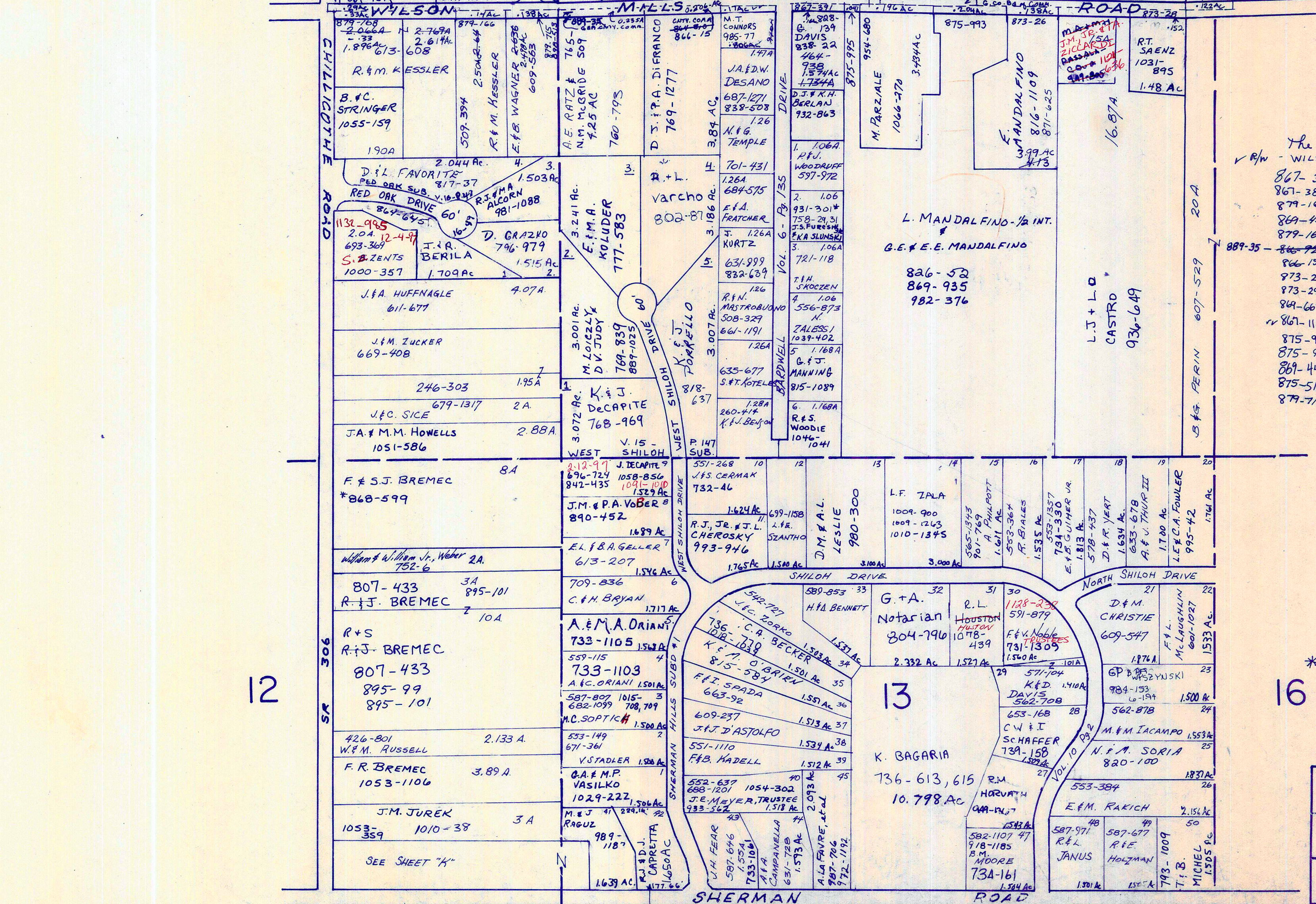
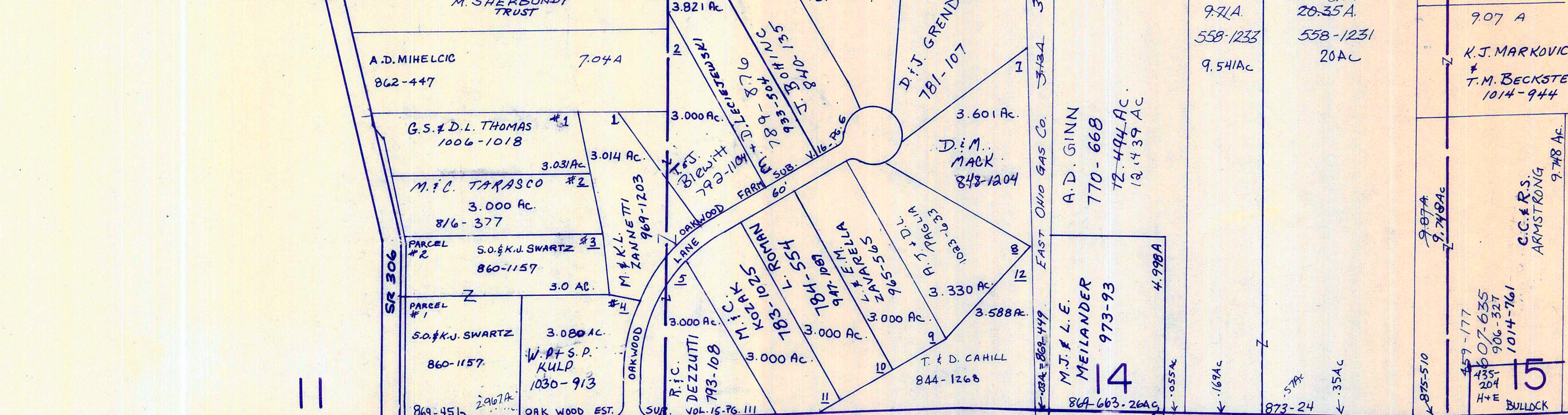
* Inadequate
description

JANUARY 1, 1997
Relative Representation

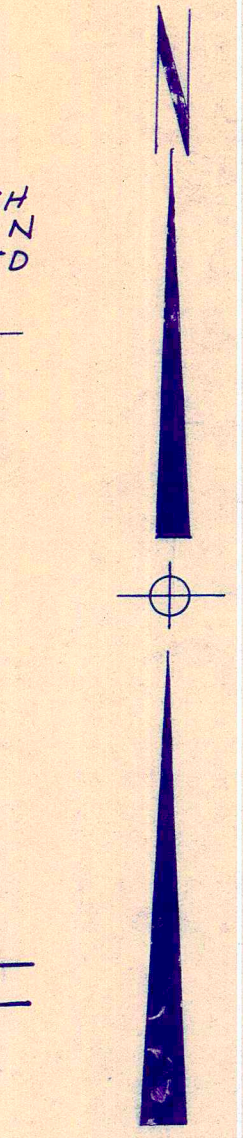
A	B	C	D
E	F	G	H
I	J	K	L
M	N	O	P

CHESTER COUNTY

TRACT ONE



SEE MAP "H"



SCALE 1"=300'
JAN. 1, 1996

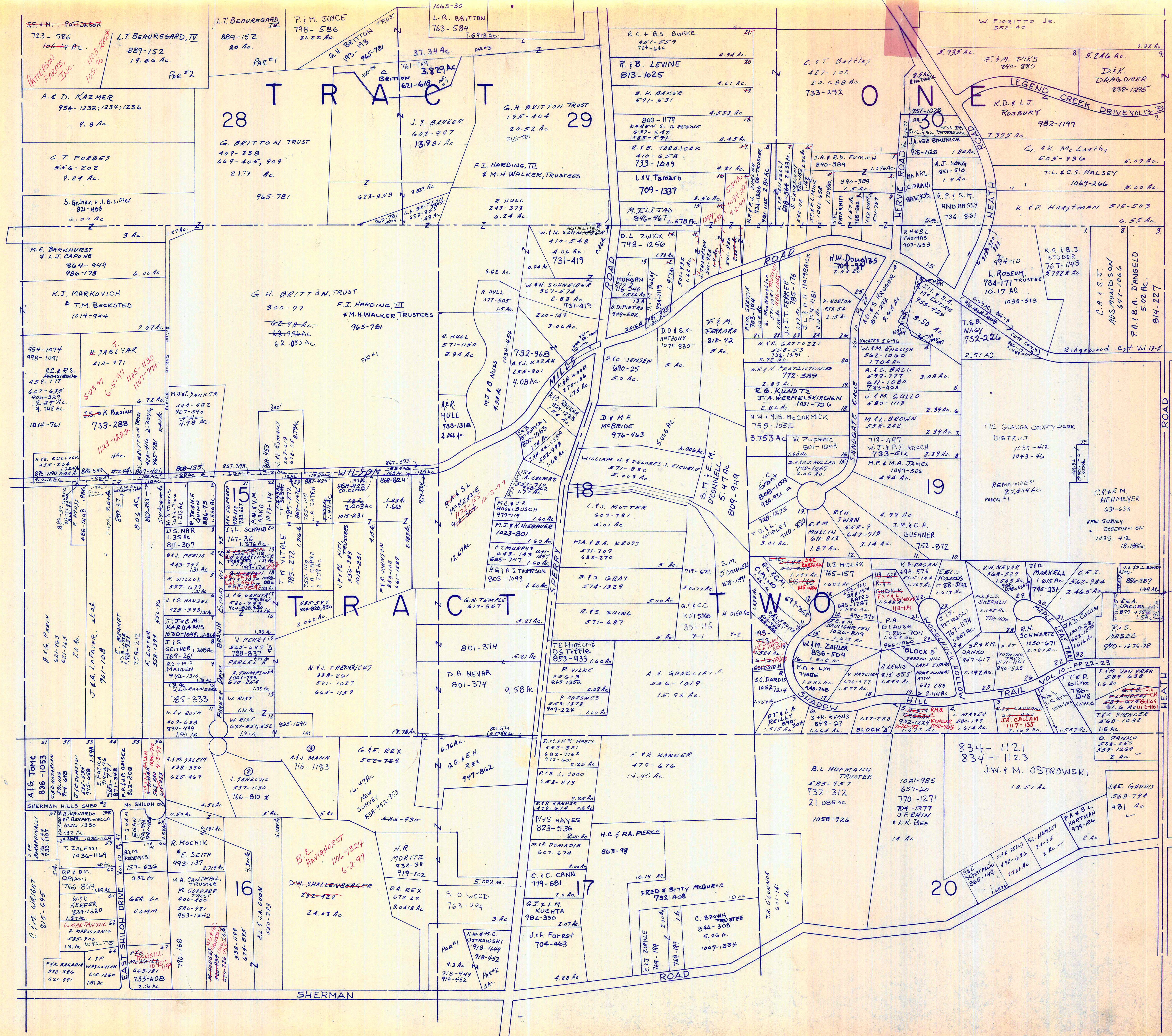
- The GEORGE CO. Bd. of COMMISSIONERS
Wilson Mills Rd.
- 867-39 1/2 = .16 AC
 - 867-38 1/2 = .16 AC
 - 874-168 = .13 AC
 - 869-451 = .29 AC
 - 879-166 = .14 AC
 - 866-77 = .23 AC
 - 866-15 = .20 AC
 - 873-26 = .13 AC
 - 873-29 = .15 AC
 - 869-663 = .26 AC
 - 867-1145 = .17 AC
 - 875-993 = .20 AC
 - 875-995 = .04 AC
 - 869-449 = .13 AC
 - 875-510 = .12 AC
 - 879-715 = .13 AC

✓ indicates survey on file with tax map dept.

* INADEQUATE DESCRIPTION
JANUARY 1, 1997
RELATIVE REPRESENTATION

A	B	C	D
E	F	G	H
I	J	K	L
M	N	O	P

CHESTER G



SCALE 1" = 300'

- YR. GAUGA Co. COMM. R/W - WILSON MILLS Rd.
- 867-461 = 166 AC
 - 867-376 = 634 AC
 - 867-398 = 213 AC
 - 869-453 = 21 AC
 - 867-393 = 10 AC
 - ✓ 867-1147 = 12 AC
 - 868-125 = 22 AC
 - 876-349 = 25 AC
 - 875-170 = 216 AC
 - 868-824 = 165 AC
 - 868-822 = 197 AC
 - 877-424-425 = 142 AC
 - 887-37 = 068 AC
 - 887-37 = 14 AC
 - 877-324 = 129 AC
 - 914-179 = 13 AC
 - SL 12-934-833 = 201 AC

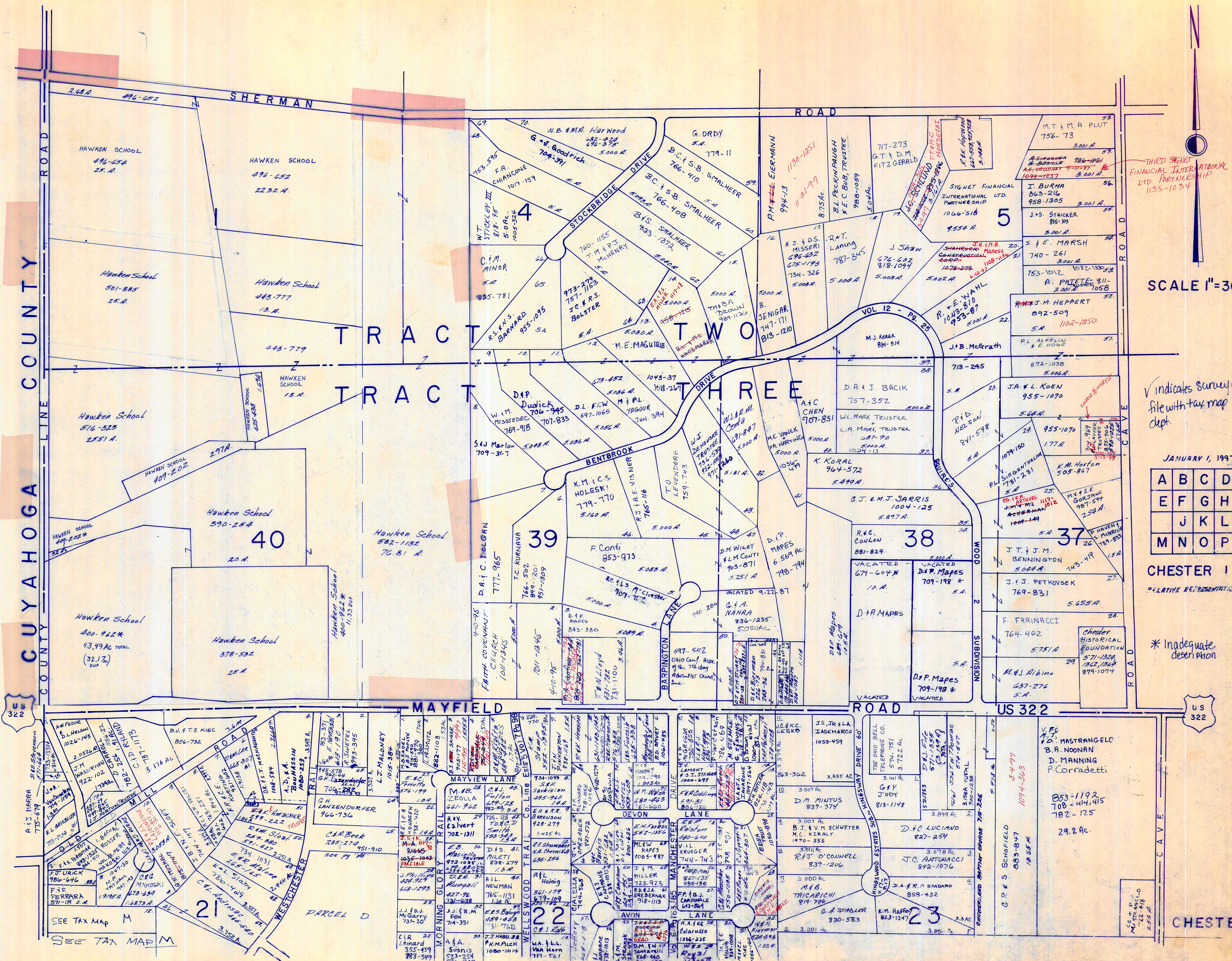
✓ indicates survey on file with tax map clpt.

* Inadequate description

JANUARY 1, 1997
RELATIVE REPRESENTATION

A	B	C	D
E	F	G	H
I	J	K	L
M	N	O	P

CHESTER H



THIRD SKENET
FINANCIAL INTERNATIONAL
LTD. PARTNERSHIP
1135-1034

SCALE 1"=300

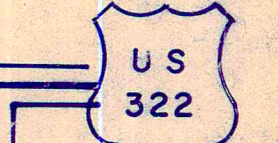
Indicates survey on
file with tax map
dept.

JANUARY 1, 1997

A	B	C	D
E	F	G	H
J	K	L	
M	N	O	P

CHESTER I
RELATIVE REPRESENTATION

* Inadequate
description



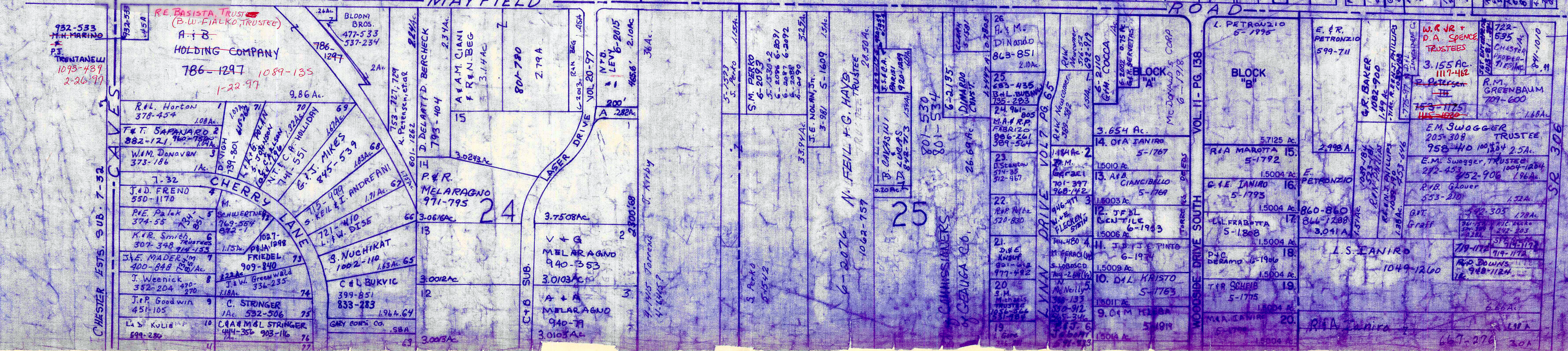
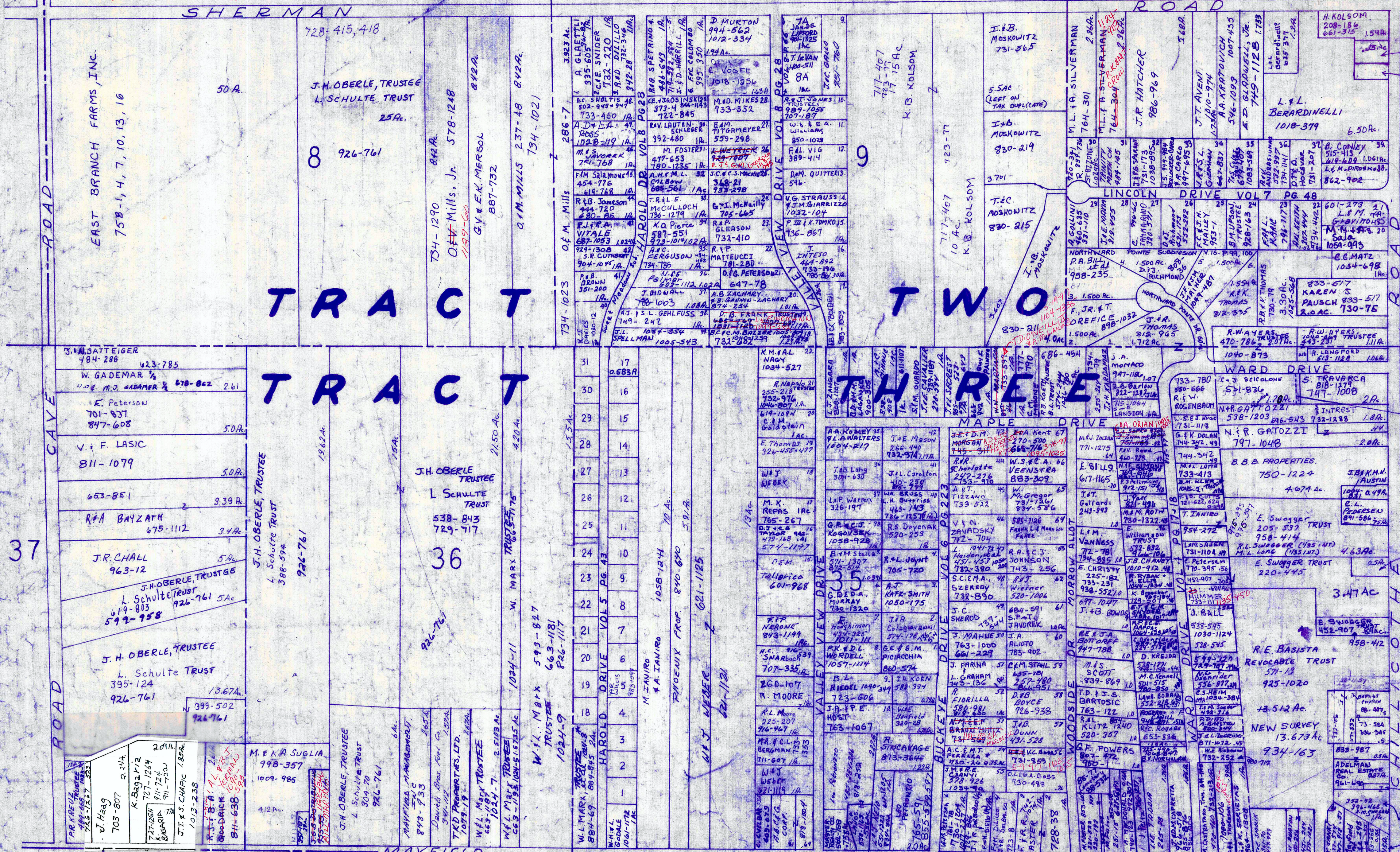
CHESTER



SEE TAX MAP M
SEE TAX MAP M

HAROLD DRIVE ALLOT. VOL. 5 PG. 43

1	J. T. ECKHART	681-9	21	H. Podewski	
2	J. P. NITRAN	754-918	22	R.H. Moushan	480-770, 994-277, 1050-1080
3	D. H. CRASSO	647-527	23	N.T. Butler	537-1253
4	M. B. Phillips	516-290	24	S. SKOCH	938-580, 756-397
5	AR. WILLIS	983-1047	25	D. J. Sapanato	918-1473-75
6	H.M. PLATEK	341-1041	26	REI C.A. Horn	726-37, 673-1231
7	AA. BARGIULO	916-885	27	E. Smith	784-479
8	E.L. VANTOR	741-1151	28	M.J. M. Lukacs	734-89, 678-1220
9	D. NEWTON	1044-1002	29	Ed. Kropac	731-1037, 644-82
10	J.C. Przek	637-209-365	30	Ed. MARLARD	676-819
11	K.N. S. Desgraves	1002-1038	31	M.E. Waller	748-1127, 799-745
12	J.D. Krasovec	744-1485-27	32	M.L. Colbow	695-561
13	J.E. S. DURCHAK	1059-518			
14	M.G. Seavell	562-394			
15	T.R. Roach	733-481, 452-23			
16	J.P. HINNARD	752-844			
17	E.S. FRMLUCHTAG	752-844			
18	J.A. DADDARIO	963-881			
19	J. FADEI	J. Smith 805-371, 491-483			
20	J.N. RICE	1000-810, 144-788			
	E.J. FELT	1103-891			



305

12

34

26

Handwritten notes: 36, C.J. SZEDLAK, 1107, 745, 618-93

SCALE 1"=300

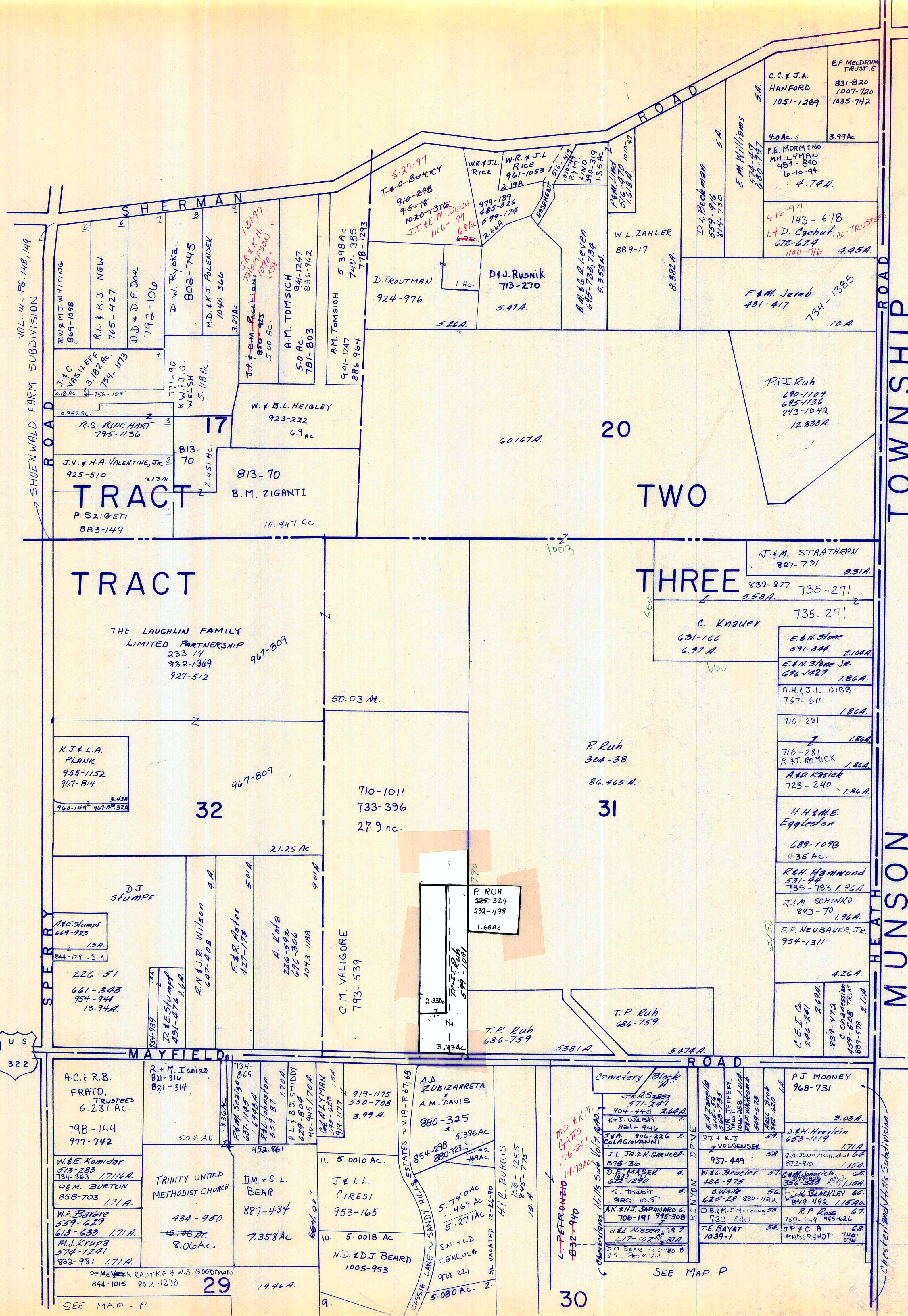
JANUARY 1, 1997
RELATIVE REPRESENTATION

A	B	C	D
E	F	G	H
I	J	K	L
M	N	O	P

CHESTER

*Inadequate description

Indicates survey on file with tax map dept.



MYRLIN HEIGHTS SUB.

VOL. 3 Pg. 4 PLATS
SCALE 1" = 100'

21A	W.M. Galardi	520-850
22A	T.M. Phillips III	667-1147
23A		
24A		
25A	E.M. Kosarke	875-1267
26A	D.J. Wenner	1045-1274
27A	J. Brown-Volpe	714-526
28A	C.C. Stevens	703-1340
29A	R.T. Crowl	846-434
30A	M.M. Plumpton	
31A	J.E. Hoover	990-1005
32A	R.T. & C.L. Ryan	
33A		
34A		
35A		
36A		
37A		
38A		
39A		
40A		
41A		
42A		
43A		
44A		
45A		
46A		
47A		
48A		
49A		
50A		

COTTREL DRIVE

47	R.A. & L.M. Barber	855-1201
48	J.J. & M.J. Pavilonis	811-1023
49		
50	R.M. Ianiro	
51		
52	P.E. Shellhammer	703-215
53		
54		
55		
56		
57		
58		
59	L.L. Crosby	756-1123

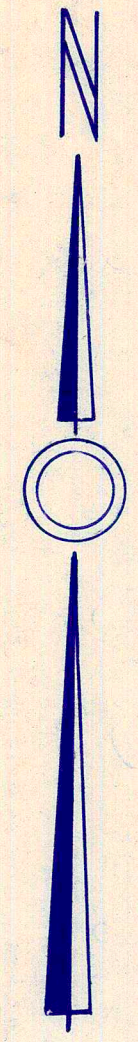
Indicates Survey on file with tax map dept.
* Inadequate description

JANUARY 1, 1997
RELATIVE REPRESENTATION

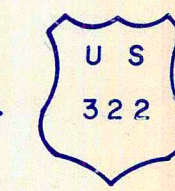
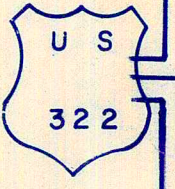
A	B	C	D
E	F	G	H
I	J	K	L
M	N	O	P

CHESTER L

SCALE 1" = 300'
JAN 1, 1983



MUNSON TOWNSHIP



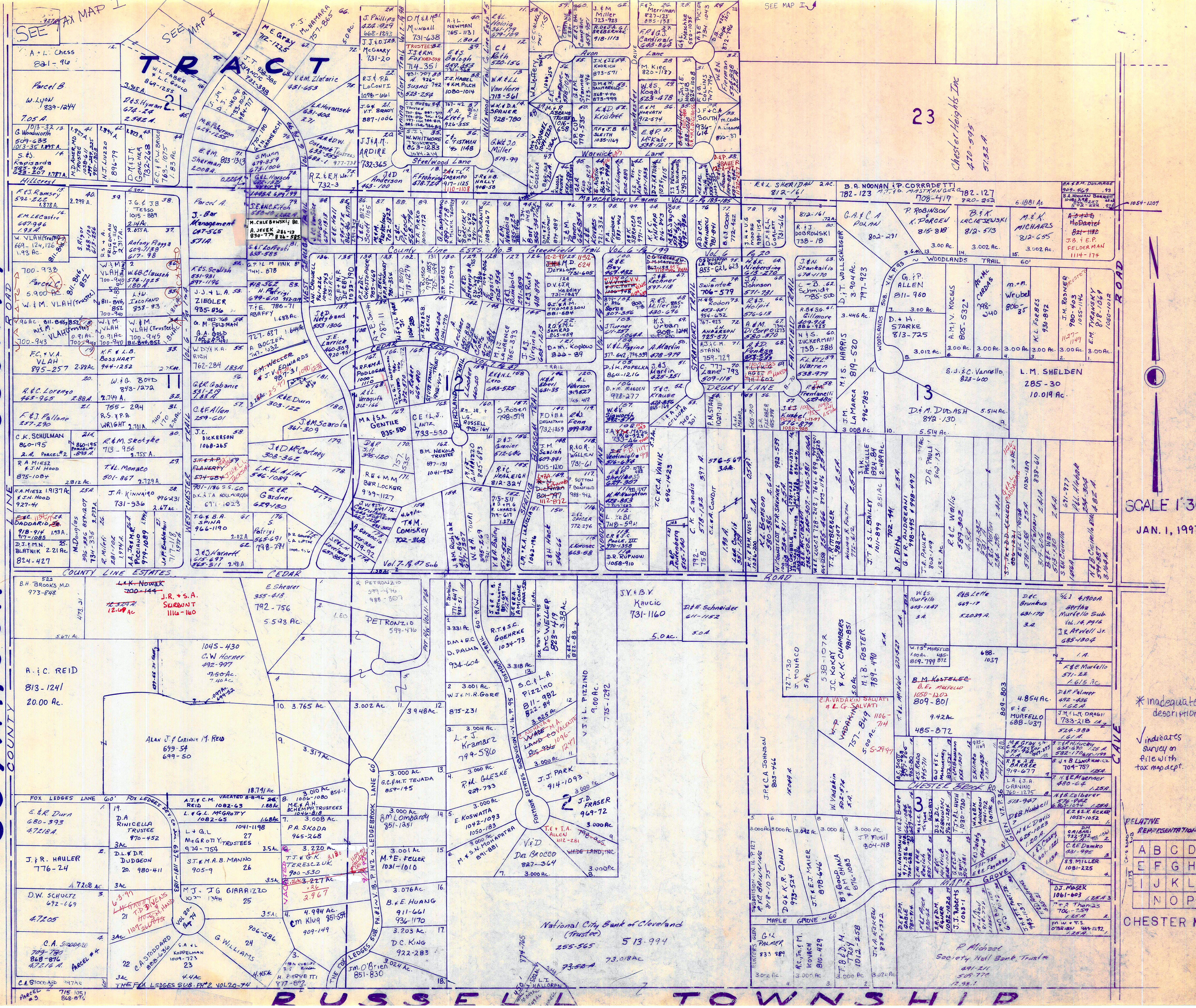
30

SEE MAP P

SEE MAP P

MATCH LINE

CUYAHOGA COUNTY



SEE MAP I

SEE MAP I

23

Chester Heights Inc
410-595
5152 A

SCALE 1"=300'

JAN. 1, 1997

* inadequate description

✓ indicates survey on file with tax map dept.

RELATIVE REPRESENTATION

A	B	C	D
E	F	G	H
I	J	K	L
M	N	O	P

CHESTER M



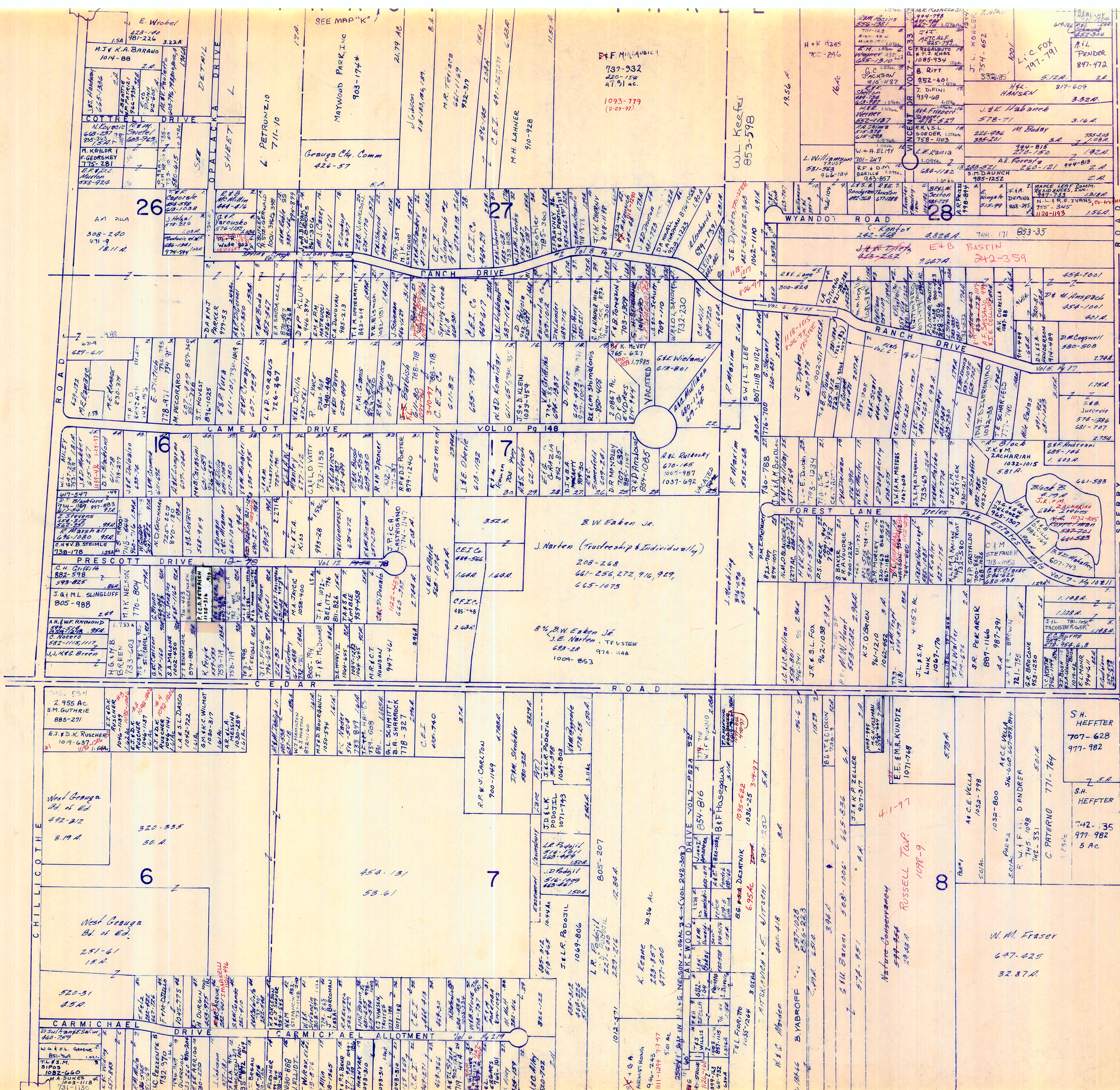
SCALE 1"=300

✓ indicates survey on file with tax map dept
JANUARY 1, 1997
RELATIVE REPRESENTATION

A	B	C	D
E	F	G	H
I	J	K	L
M	O	P	

* Inadequate description

RUSSELL OWNERSHIP



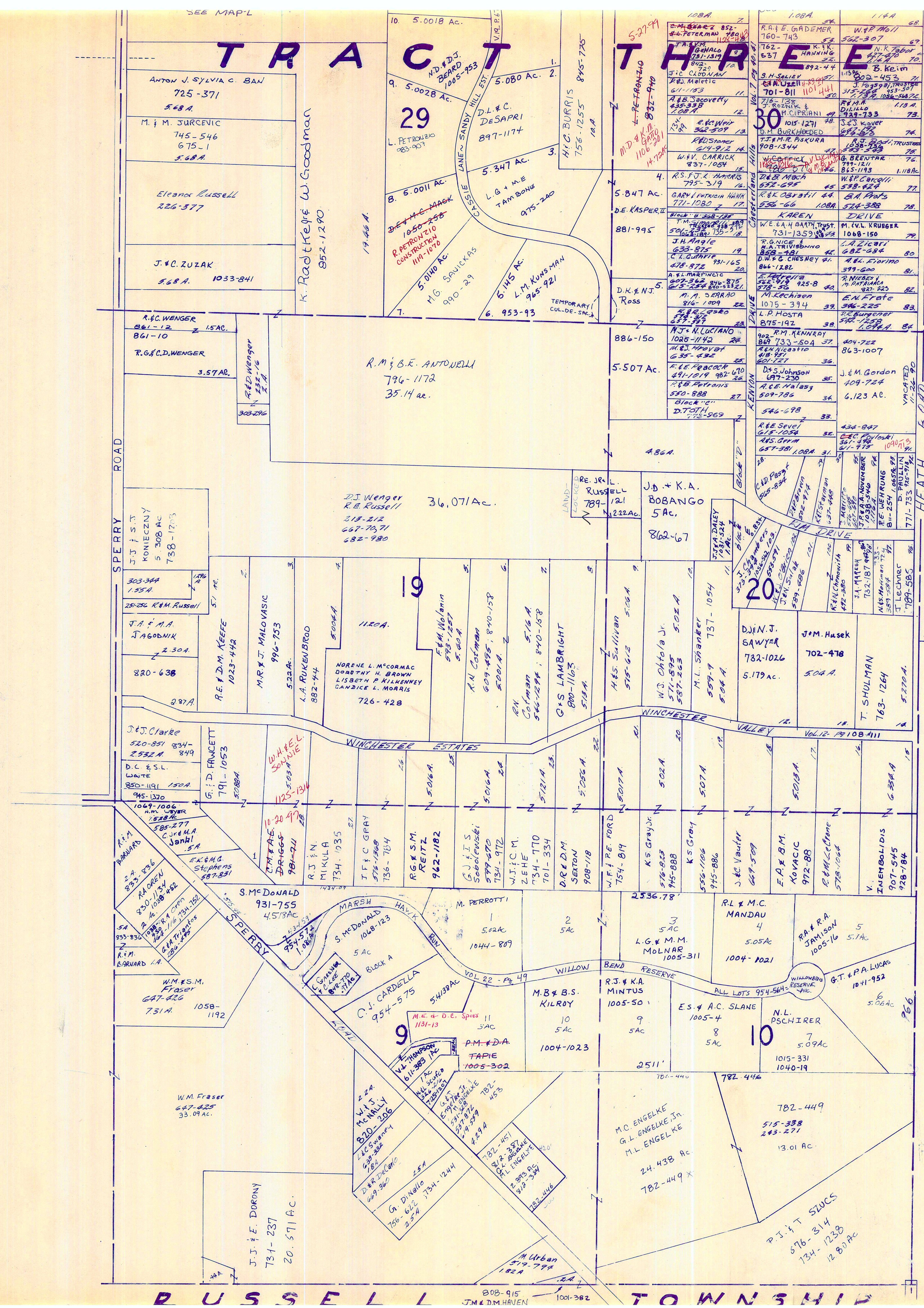
SCALE 1" = 300'

- SNDAGEE SURVEY Vol. 6 Pg. 49 Mats
1. E. M. MOHR 200-812
 2. E. L. MOHR 994-611
 3. E. Gustafson 259-599, 672-712
 4. R. C. Burns 259-7, 576-954, 6
 5. J. L. Jacobberger 781-154
 6. " " "
 7. " " "

* Inadequate description
 ✓ indicates survey on file with tax map dept
 JANUARY, 1997
 RELATIVE REPRESENTATION

A	B	C	D
E	F	G	H
I	J	K	L
M	N	O	P

CHESTER



MUNSON TOWNSHIP

SCALE 1" = 300'
 JANUARY 1, 1997

RELATIVE REPRESENTATION

* Inadequate description
 ✓ indicates survey on file with Tax Map Dept.

A	B	C	D
E	F	G	H
I	J	K	L
M	N	O	P

CHESTER P

1997

SEE MAP 1

MATCH LINE

T R A C T

T H R E E

R U S S E L L T O W N S H I P